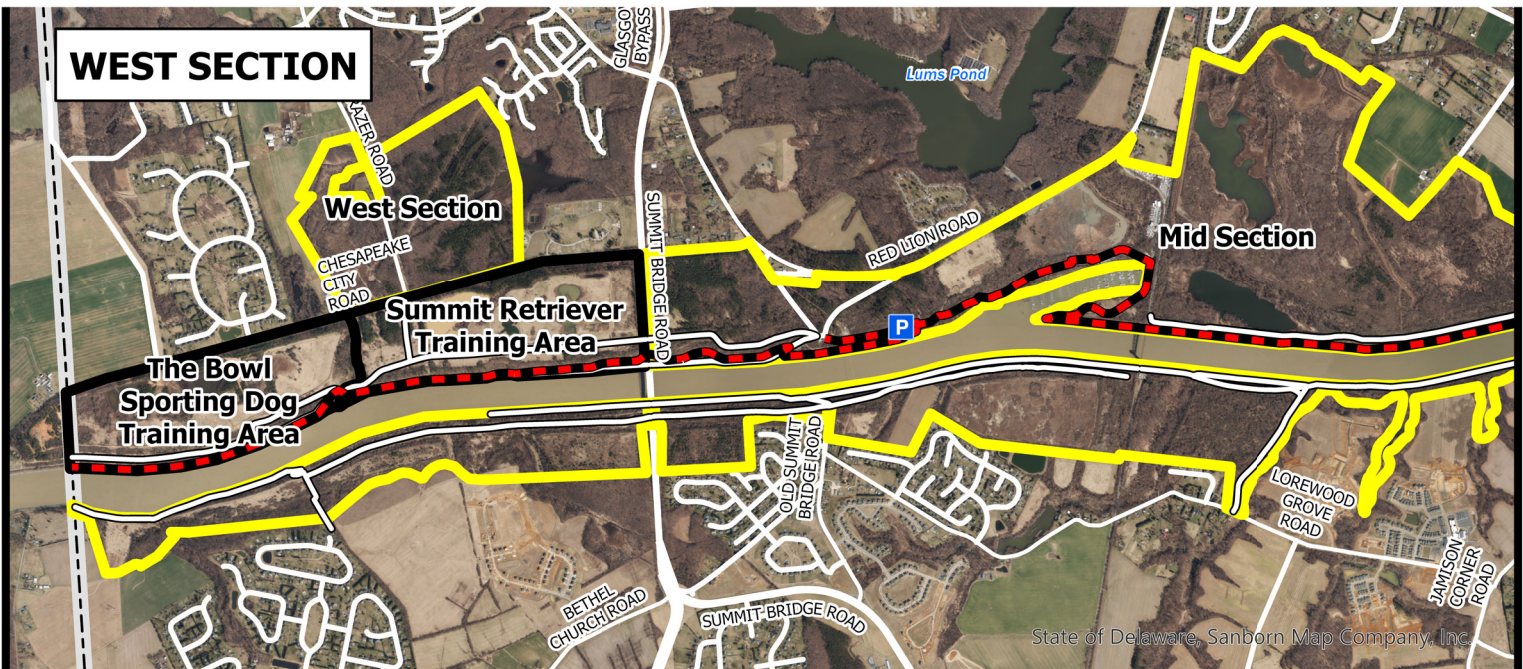
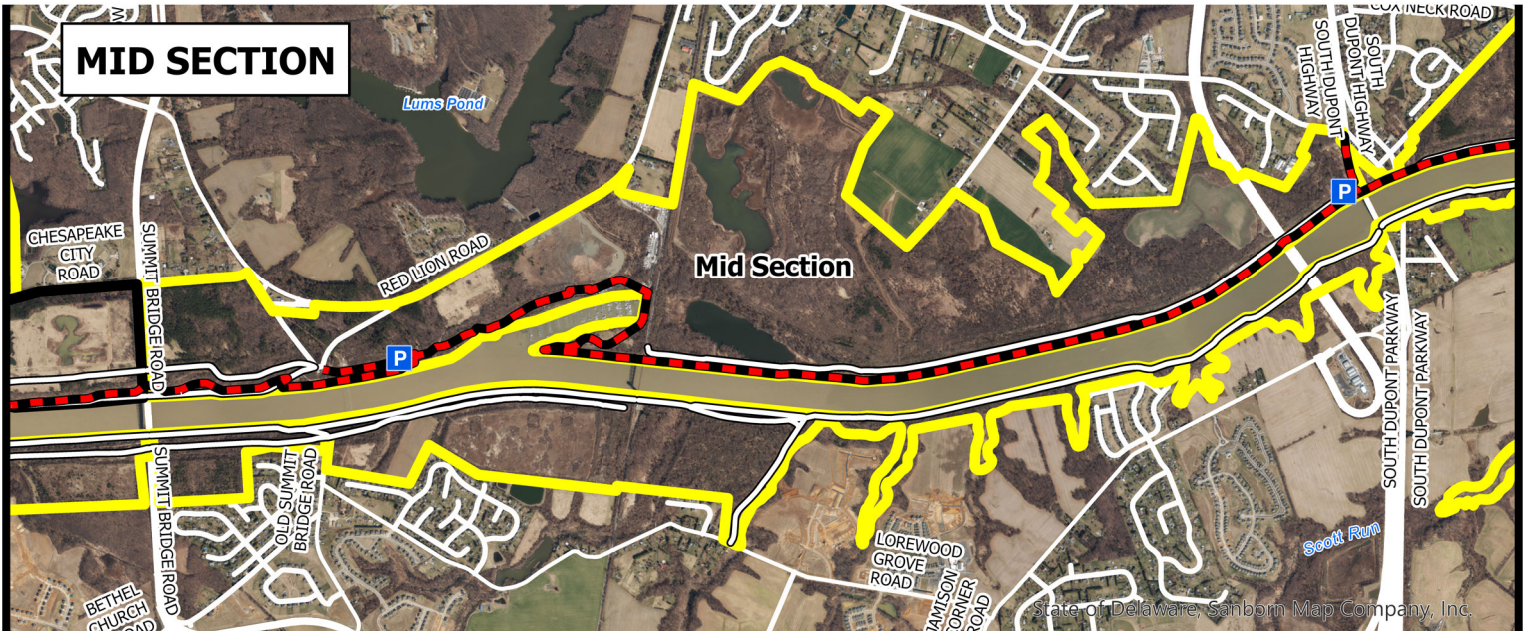
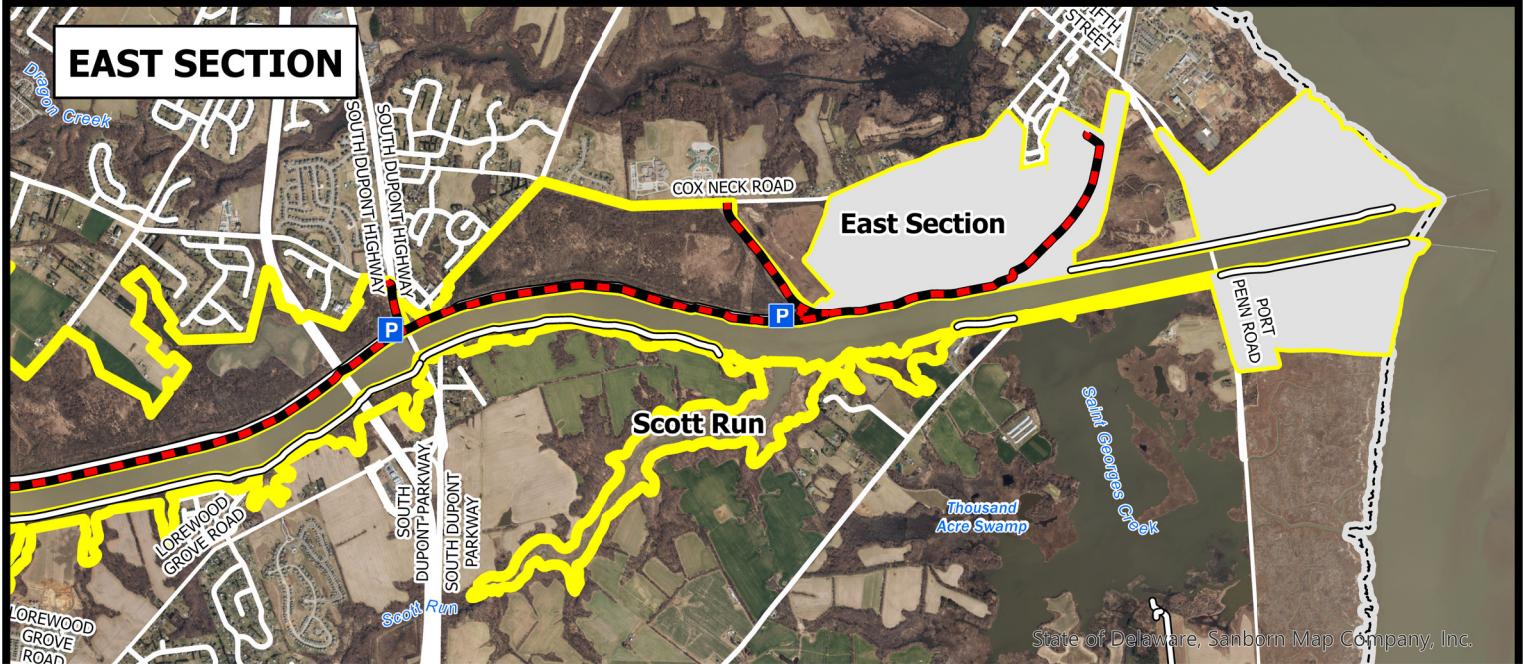




C&D CANAL CONSERVATION AREA

General Overview



Wildlife Area

Area Closed - No Hunting or Trapping

CAP Exempt

Maintained Roadway

Michael Castle Trail



BOUNDARIES SHOWN ARE APPROXIMATE AND SHOULD ONLY BE USED AS A GUIDE

General Rules and Regulations Governing Land and Waters
Administered by the Delaware Division of Fish & Wildlife
Effective July 1, 2024 – June 30, 2025

Persons may use state wildlife areas only as directed by the following rules, which have been established by Wildlife Regulations 3900 of the Division of Fish and Wildlife, pursuant to Section 103, 7 Delaware Code. Please refer to the area specific Hunting maps for additional access and allowable use information.

GENERAL

1. A Conservation Access Pass is required for any registered motor vehicle used to access designated Delaware State Wildlife Areas for any allowable activities, including hunting, birdwatching, hiking and photography.
2. Entry permitted between ½ hour before sunrise and ½ hour after sunset unless lawfully hunting, fishing, or boating.
3. All lands administered by the Division are Carry-In / Carry-Out.
4. The following activities are prohibited on State Wildlife Areas:
 - Damaging or defacing buildings, equipment, structures, signs, or land features.
 - Littering or dumping trash including yard waste.
 - Operating radio-controlled devices, including drones, or the launching of model rockets.
 - Metal-detecting or use of metal detectors.
 - Allowing dogs to run off leash. See #16 for dog training information.
 - Camping or lighting open fires of any type.
 - Swimming.
 - Posting signs, banners, or notices of any type.
 - Vending or soliciting of any type.
 - Placing caches or letterboxes.
 - Cutting, injuring, or removing trees, shrubs, wildflowers, ferns, mosses, other plants, or firewood.
 - Collecting and/or removing any wildlife species unless lawfully hunting, trapping, or fishing.
 - Operating unlicensed vehicles or any other motorized vehicle (including motorized bicycles) off established roadways or driving in excess of 20 MPH on wildlife area roads.
 - Parking in a manner that blocks access to a road, trail, or boat ramp. Violators will be towed at owner's expense.
 - Leaving a vehicle or trailer unattended over 24 hours.
 - **Deployment and/or use of trail cameras.**
5. Horses and bicycles (including electric bicycles) may only be ridden on roads or trails that have been designated by the Division on current area maps.

HUNTING/TRAPPING

6. Hunting permitted in accordance with state laws, regulations, and rules as specified on current wildlife area maps.
7. Placement of any temporary deer stand or blind that involves placing nails or screws into trees is prohibited. Stands and blinds are prohibited within all refuges and safety zones. See respective area maps for when and where temporary stands and blinds may be used.
8. All hunters that install temporary deer stands or blinds on State Wildlife Areas are required to obtain a free registration number by visiting the Division's website at <https://de.gov/fw> or by calling

the Wildlife Section at (302) 739-9912. This registration number must be legibly displayed on all stands and blinds.

9. No more than six (6) hunters may participate in driving deer at any one time.
10. Hunting is prohibited on all Division dikes and walking on dikes is prohibited during all waterfowl seasons.
11. Entering tidal and/or impounded waters managed by the Division is prohibited during the waterfowl season unless lawfully hunting or trapping.
12. Persons who possess, consume, or are under the influence of drugs or alcoholic beverages are prohibited from hunting or possessing firearms.
13. Firearms are allowed except for designated prohibited areas; the Division may authorize firearm possession in designated prohibited areas.
14. The discharge of any firearm including paintball guns, air rifles, bows, and crossbows is prohibited unless lawfully hunting. Target shooting is prohibited at any time.
15. Trapping is prohibited except by valid permit holders.

DOG TRAINING

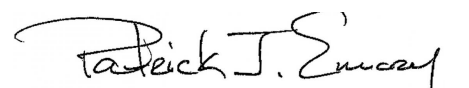
16. Dog training is prohibited except:
 - Within established dog training areas;
 - During the open hunting season for the game that the dog is being trained to hunting; and,
 - In accordance with rules established on current area maps.

FISHING/CRABBING

17. Licensed fishing in any Division-managed wildlife area pond is prohibited from September 1 through January 31 and during the spring turkey season except as permitted according to area-specific rules established on current area maps.
18. Crabbing or fishing on or from any dike or water control structure or within any impoundment is prohibited at all times.

NOTICE:

Trail cameras may not be deployed on State Wildlife Areas. Any trail cameras found on State Wildlife Areas will be removed and confiscated.


Patrick J. Emory, Director

For further information contact the Division of Fish and Wildlife at (302) 739-9912, New Castle County HQ: (302) 834-8433, Kent County HQ: (302) 284-4795, Sussex County HQ: (302) 539-3160.

For emergencies or to report violations please call the Enforcement Section at 1-800-523-3336.