



DelDOT Real-Time Transportation Information

Gene Donaldson
Operations Manager, DelDOT
Transportation Management Center

July 22, 2017

DelDOT Real-Time Traveler Information

Features



Report an Issue

Use the "Report an Issue" feature to report a roadway condition (traffic potholes, debris, streetlights, etc.) by submitting a form or calling DelDOT's TMC24/7:

Select "Report an Issue" through the DelDOT App;

Dial #77 (in Delaware) from any cell phone;

Call (302) 659-4600 or (800) 324-8379; or

Email DelDOTTMC@state.de.us

For emergencies, contact 911.

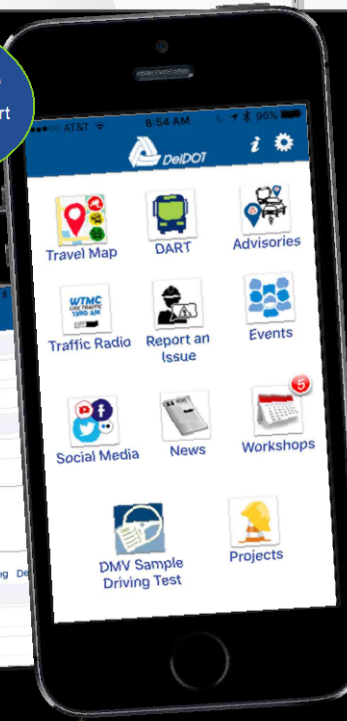


News

Direct connection to DelDOT press releases and traffic alerts.

New Feature

Now you can also report streetlight issues.



Projects

Let the DelDOT App help you find information about all projects near your location.



DMV Sample Driving Test

The DMV sample test will allow our customers to come to the DMV confident and well prepared for their driver license knowledge test.



Events

Detailed travel information about road closures, beach traffic and special events in Delaware.

Without your phone?

Access the same real-time traveler information from DelDOT's website (www.map.deldot.gov) and radio station (WTMC1380 AM).



Transit

Access real-time bus information, including arrival time, bus locations and fixed routes.



Radio Station

With one touch, activate a live stream of DelDOT's traveler advisory radio, WTMC1380 AM.

Perfect for hands-free access to traffic information.

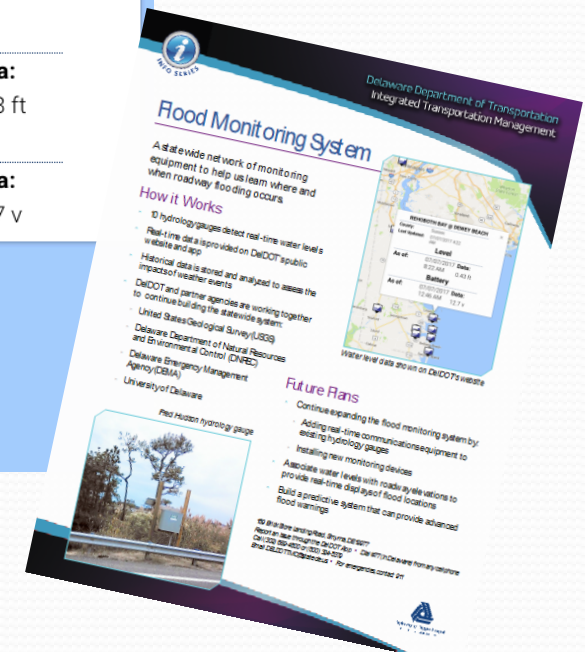
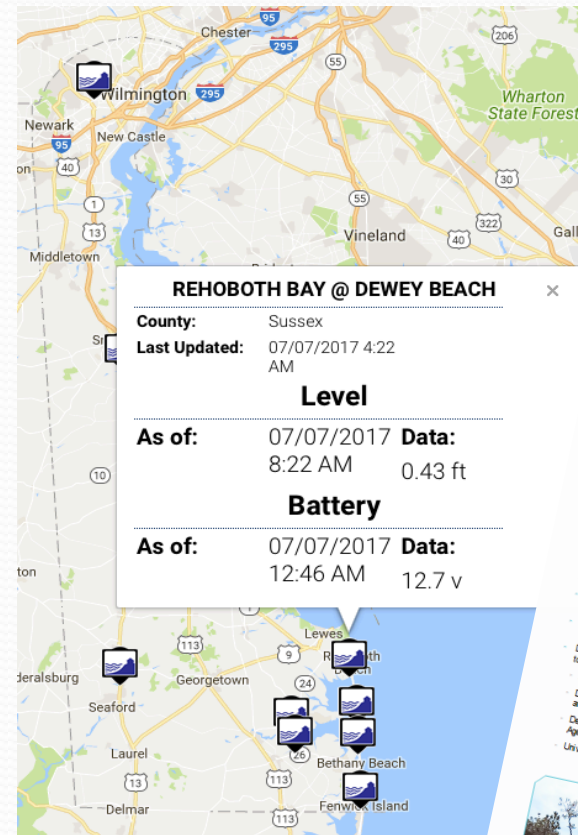


Waze™ Info

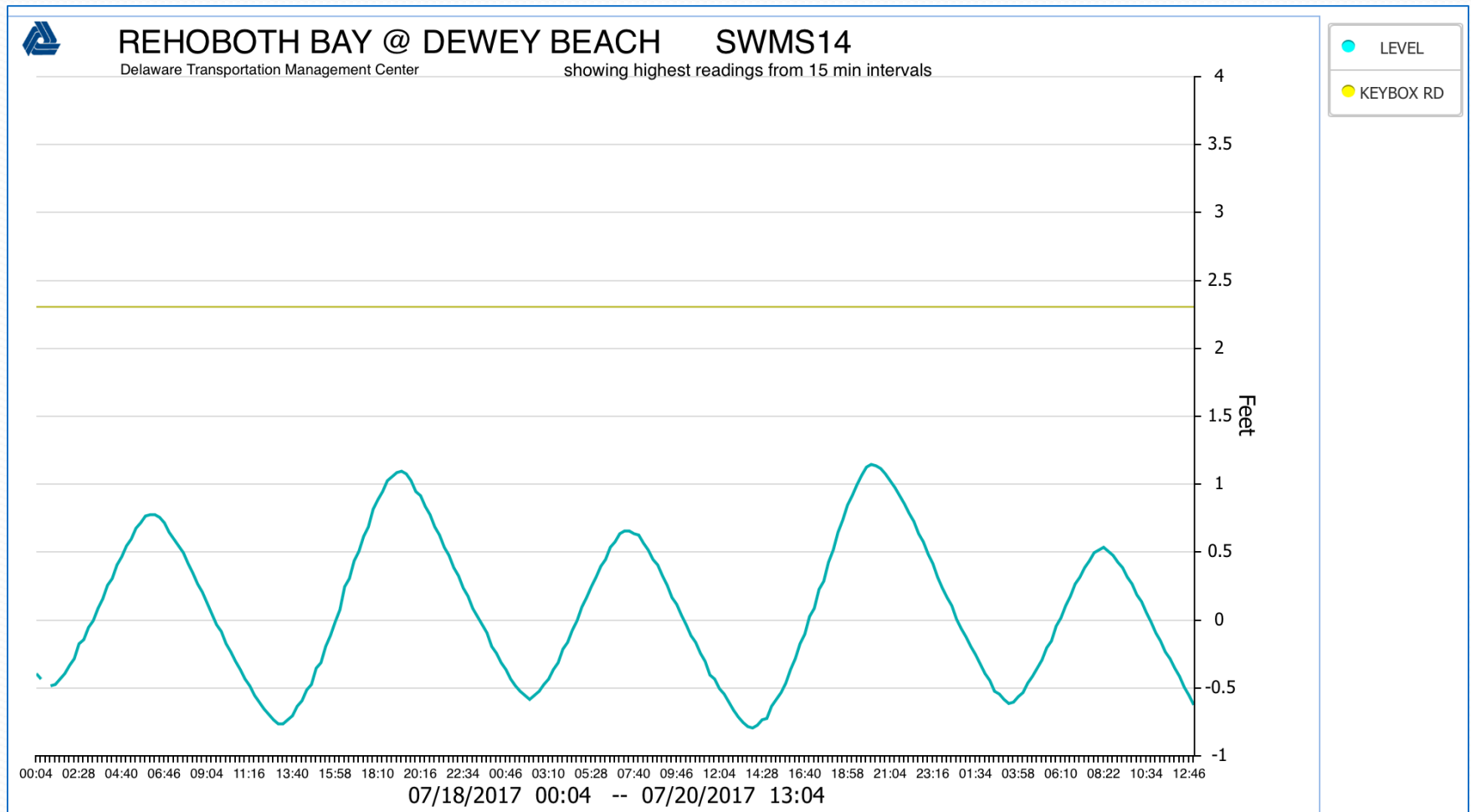
Through a new partnership, DelDOT and Waze exchange traffic data. Participating "Wazers" share reports on incidents and traffic slow-downs.

Flood Monitoring System

- Statewide network of monitoring equipment to help us learn where and when flooding occurs
- Real-Time data provided on DelDOT's website and app
- Historical data is stored and analyzed to assess impacts of weather events



Flood Monitoring System



Flood Monitoring System

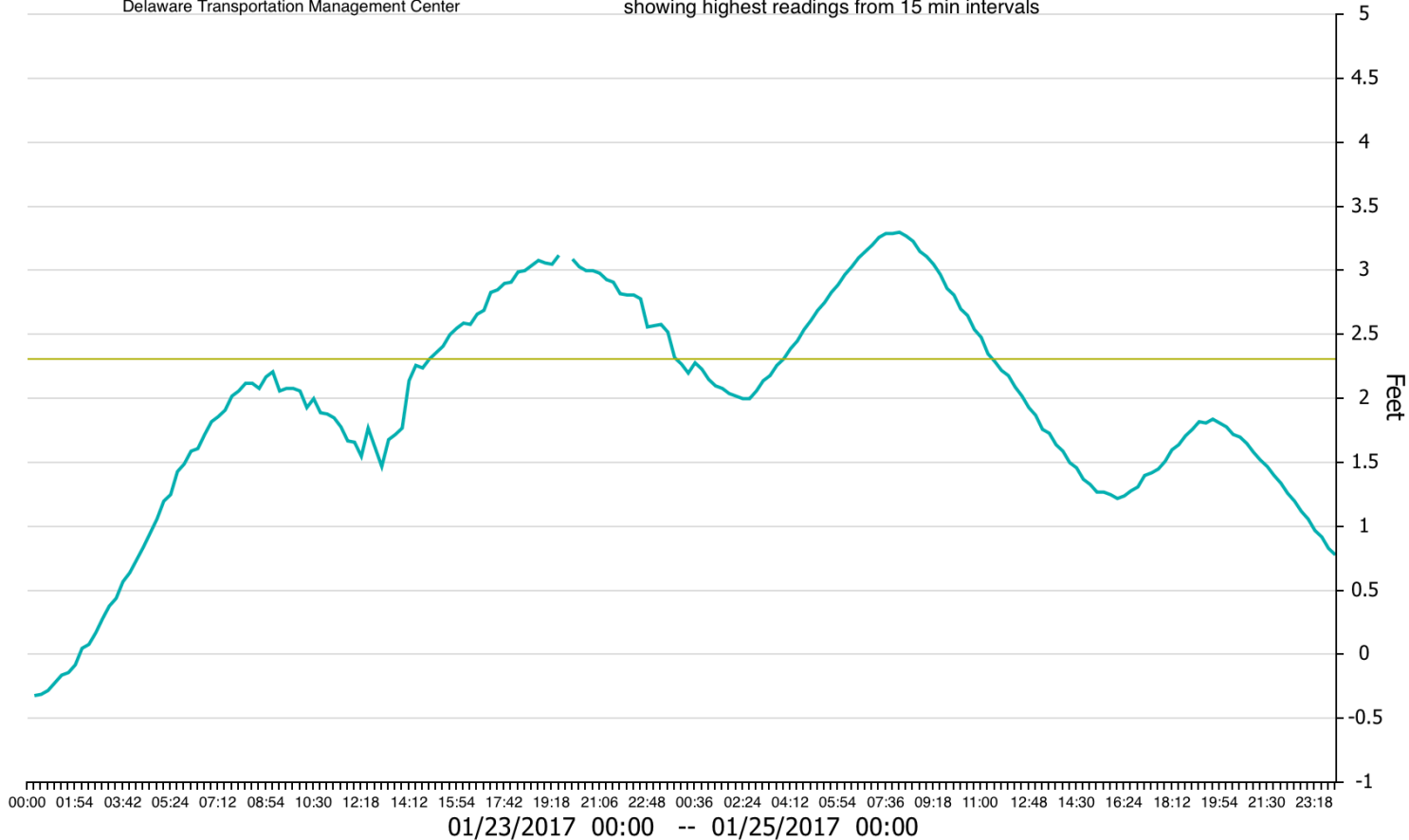
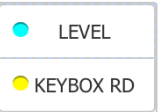


REHOBOTH BAY @ DEWEY BEACH

Delaware Transportation Management Center

SWMS14 01/23/2017 (Historical)

showing highest readings from 15 min intervals



Slaughter Beach Flood Monitoring & Warning System

